

---

## Mini Fiber Laser Marking Machine 20W,30w,50W



Fiber Marking Machine is the most popular marking machine in recent years, which is especially suitable for metal materials marking. Our marking machine adopts high quality fiber lasers and high stability vibration mirror system, which can easily meet most common laser marking applications, such as metal/nonmetal /plastic characters, text patterns, logo marks, QR code marking and used in the field of high precision of marking.

### Features

1. Perfect Marking Performance, Can mark precise design on tiny surface;

2. High Electro-optic Conversion Efficiency

Little energy coupling loss, cost saving, long service life, maintenance-free within 100,000 hours

3. Fast Marking Speed and High Efficiency

The increased processing volume in same time speeds up the investment return for customers.

4. Integrated Structure

Small and compact size, less occupied area, easy transportation

5. Internal air cooling systems, reducing energy consumption, 100, 000-hour maintenance-free.

6. USB interface, output control, can receive a variety of file formats(such as PLT, BMP, LI, JPG).

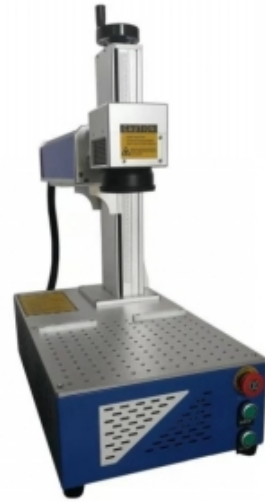
---

## Applicable Industry

Mobile phone keypads, non-opaque-plastic keypads, electronic components, integrated circuits (IC), electrical appliances, communication products, sanitary wares, tool accessories, cutters, watches, glasses, jewelry, auto parts, boxes, bags, clasps, cookers, stainless steel products, etc.

## Parameters

Model	DA20W	DA30W	DA50W
Laser Power	20W	30W	50W
Working Area	110mm * 110mm (Optional 175mm * 175mm)		
Laser type	Fiber Laser		
Wavelength	1064nm		
Cooling method	air cooling		
Engraving line speed	≤ 7000mm/s		
Repeat precision	±0.001mm		
Min. character height	0.2mm		
Machine power	≤ 800w		
Supply Voltage	AC220±10% , 50~60Hz		
Working temperature	0~40℃		



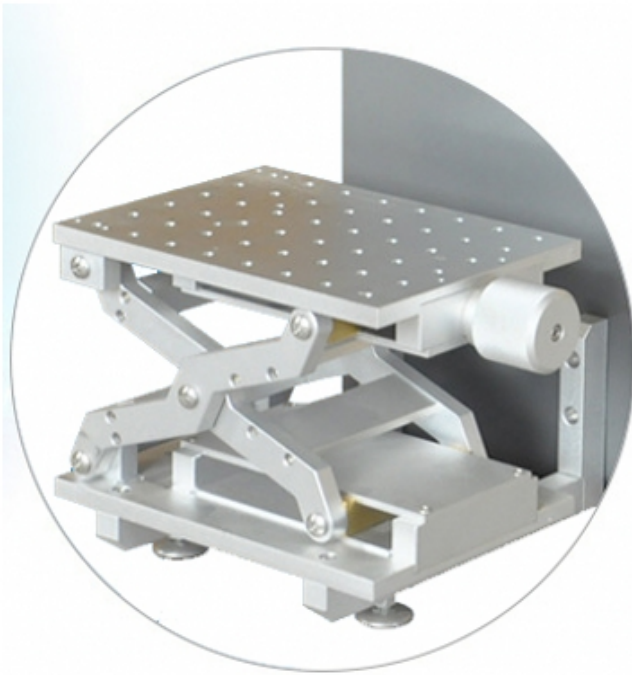
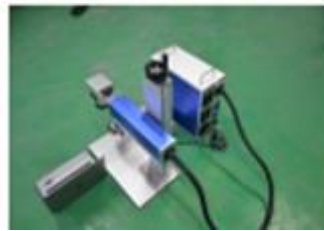
Portable Type



Desktop Type



Hand-held Type



Samples



Keyboard key Marking



Mouse Logo Marking



Metal Scale Marking



Flange Marking



Metal Marking



Car Brake Disc QR Code Marking



Brand Mark Marking



Animal Ear Tag Marking



IC Chipset Laser Marking



Metal Gold Plated Parts Laser Marking



Brand Laser Marking

## DETAILS:



### 01 Galvo lens

Equipped with automatic scanning system, friendly operation process. With 7000mm/s marking speed, 0.001mm repeat precision.

### Field lens

02

Compact size (the smallest in the world), suitable for harsh environment, friendly interface. Toprovides precision laser focusing performance. Standard 200\*200mm marking area. Optional 150\*150mm, 110\*110mm, 175\*175mm, 300\*300mm etc.







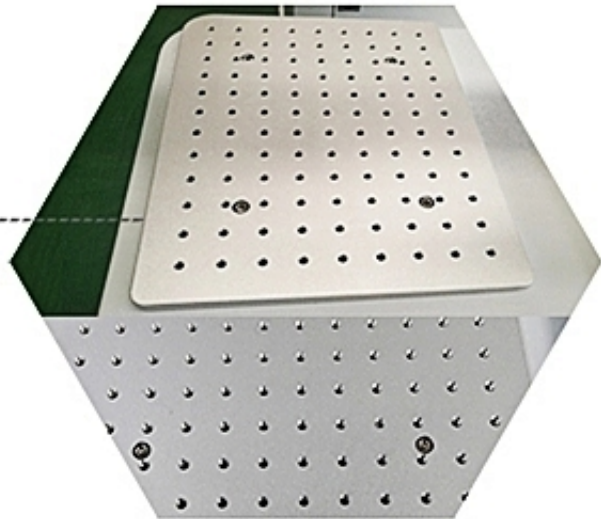
## 03

### Switch button

Humanized control system, easy to learn, safe and convenient, dust proof design.

## Working platform 04

Aluminum working table. Flat and smooth. Compact structure, taking into account the light, compact, simple interface, flexible processing direction adjustable control.





**05**

### **Laser source**

Best quality laser source,  
100000 hours lifetime.  
Raycus/IPG optional

### **Lifting wheel**

**06**

Imported high quality, high  
energy and stable fiber laser.  
High precision optical vibration  
precision components and the  
industry's top software system.





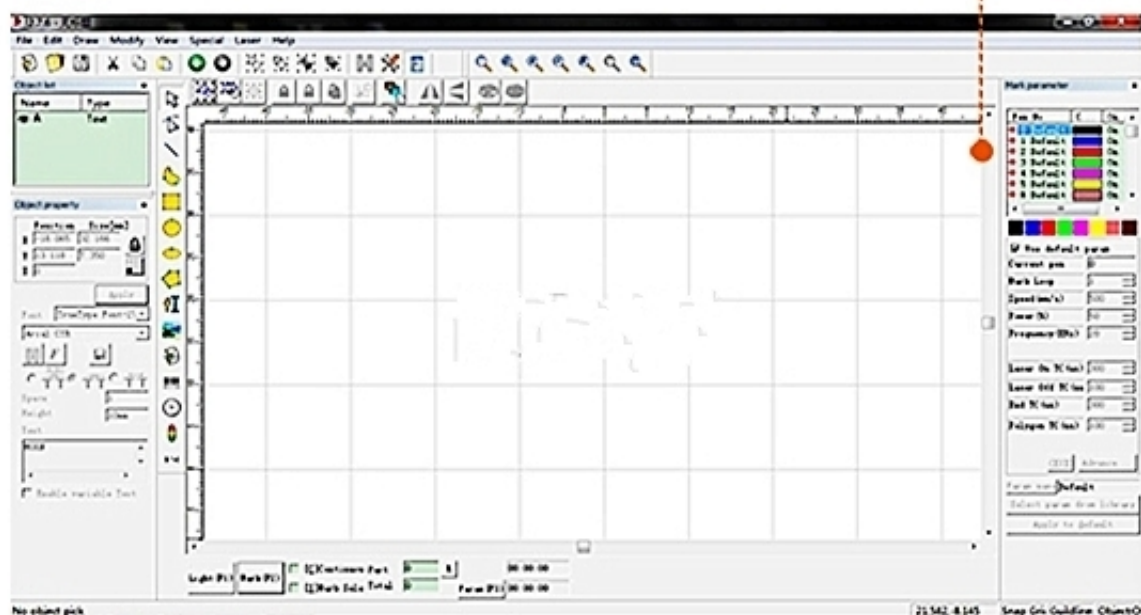


## 07 Ruler

High precision ruler,  
accurate view of fixed size,  
more precise and detailed.

## Computer system 08

Every fiber marking machine is equipped with a complete computer in which all essential software, controllers and machine parameters are installed. Even a novice can operate the machine easily.





# 09

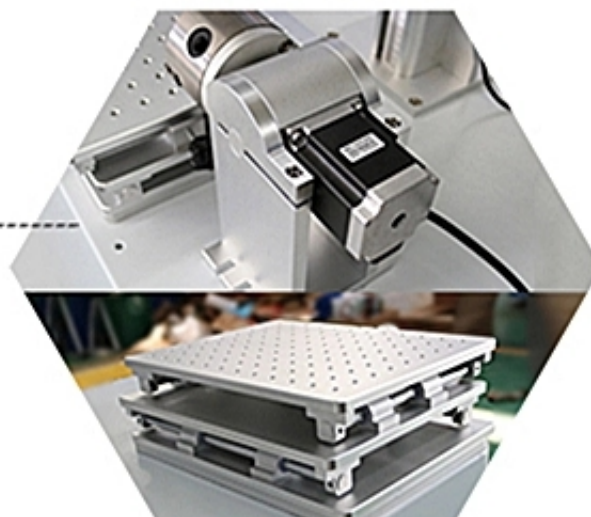
## Free parts

- 1 x fiber laser machine
- 2 x Ruler
- 3 x USB flash disk
- 4 x Foot Pader / switch
- 5 x Power cable
- 6 x Ground wire
- 7. key switch / laser switch
- 8. Emergency switch
- 9. Laser Power Adjust
- 10.Hexagon wrench

## Optional parts

Rotary device& 2D  
working table

# 10



Product link : <https://www.chinatopcnc.com/mini-fiber-laser-marking-machine-20w30w50w.html>